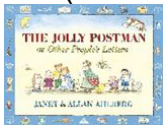


## Year 2 Spring 1 Curriculum Leaflet

### Reading and Writing

Read *The Jolly Postman*  
*Postman* (class text)



Use subordination (if, that, or, because) and coordination (and, or, but)  
Suffixes (-ful, -er, -ness)  
Read *Dear Fairy Godmother* (poem)

### Maths

Mixed addition and subtraction within 100  
Geometry: 2D and 3D shapes, symmetry  
Money: calculating and finding change

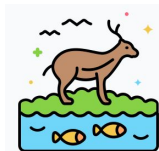
### Religious Education

Judaism: Why are they having a party?



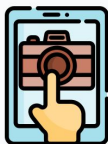
### Science

Identify and name a variety of plants and animals in their habitats, including microhabitats  
Identify and name different sources of food



### Computing

Recognise and use digital devices to take photographs



### Geography

Locate hot and cold areas of the world in relation to the equator and poles

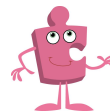
### Art

Study Andy Goldsworthy and learn about sculpture



### PSHE

Explain how I played my part in a group and how our skills complemented each other



### Home Learning

Please read with your child everyday and complete consolidation tasks set by the teacher.

### PE

Children will have two PE sessions per week. They focus on: invasion and team building



### Music

Singing songs with a small pitch range and playing a percussion instrument



Whole School Spiritual Value: **Wisdom**

Concept and Enquiry  
Based Question: **How can we make a change?**